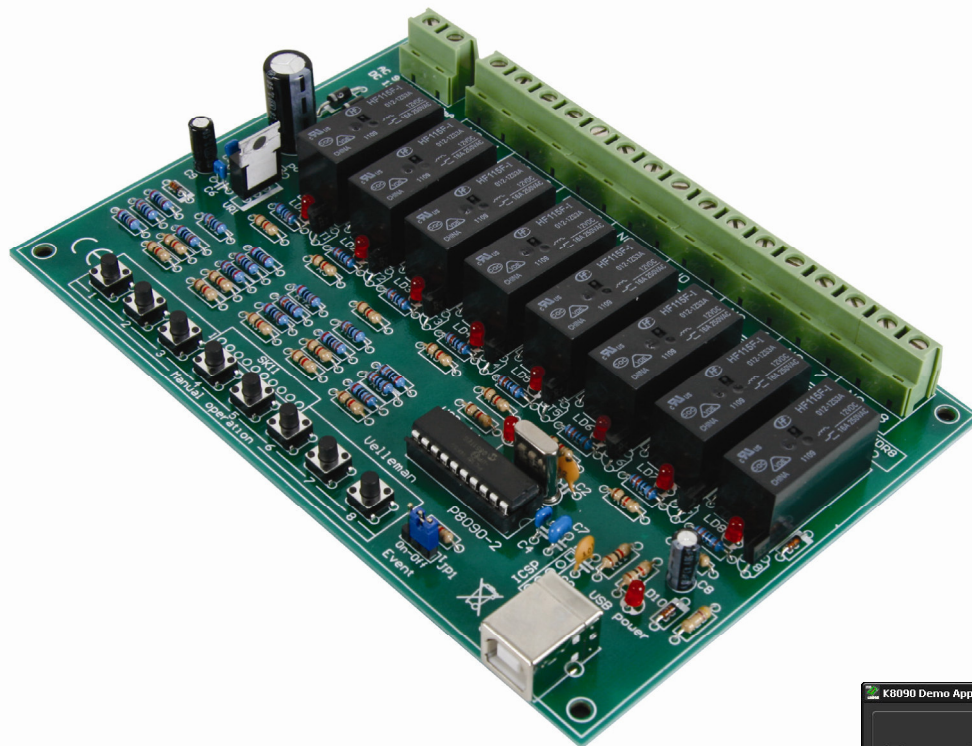




8 CHANNEL USB RELAY CARD

K8090

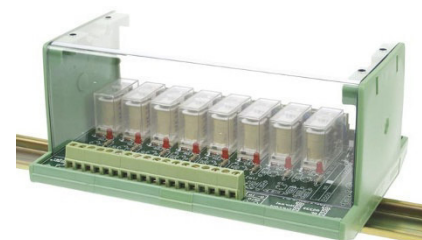
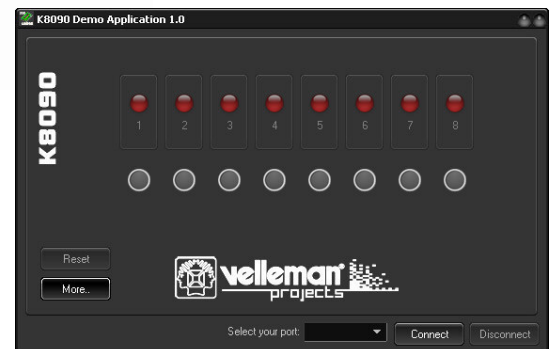


Eight relay channels controlled by your computer!

Use your computer USB port to connect to the outside world. Connect up to 16A to each of the high power relays. Board space for extra VDR noise suppressors is provided and on board push buttons can be used to test/operate all the relays.

A dll for own software develop-

- USB controlled relay card
- 8 high power relays: 16A each (resistive load)
- Optional VDR (type VDR300) transient suppression for use with inductive loads.
- LED indication for power and relay action
- Manual operation for toggle, momentary or timer operation (selectable through software)
- Timer settings up to 18 hours (dll function)
- Optional open collector connectivity (push button simulation)
- Power supply for relays: 9-10Vac or 12 to 14Vdc (500mA)
- DLL for own software development (download only)
- Event driven and open protocol
- Two way PC communication (USB Event return option)
- Dimensions: 160 x 107 x 30mm / 6.3 x 4.2 x 1.2"



Optional DIN rail enclosure B8006 (Note: cut-out the USB connector)

Minimum system requirements:

- ◇ PC running USB compatible Windows version
- ◇ USB1.1 and USB2.0 full speed compatible
- ◇ Internet connection for software download