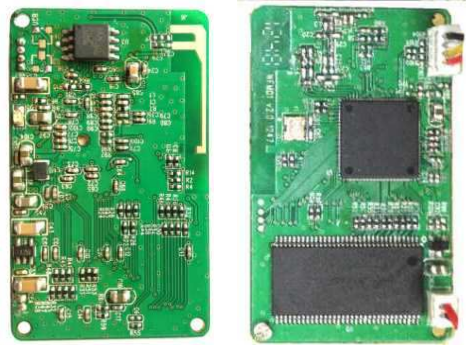


Description

This WiFi module has been designed to connect USB video class device and allow people to view video on iPhone. The module accepts most UVC compatible USB camera or video devices.

Features

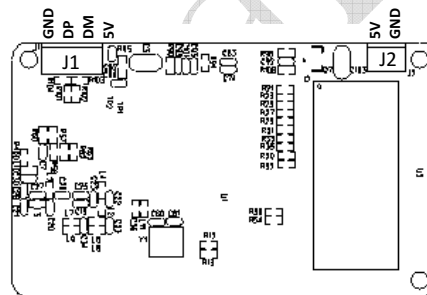
- ✓ Small in size 30x50mm, with on board antenna
- ✓ Plug and play, Support USB device hot plug
- ✓ No internet or local network required
- ✓ Each module has its own SSID
- ✓ Multiple users can view the live video stream
- ✓ Working distance >10M in open area
- ✓ Accept most USB2.0 UVC devices
- ✓ Status LED
- ✓ Support VGA format 30fps (depends on camera)
- ✓ Video Latency: <0.5sec
- ✓ Free apps available
- ✓ DC5V or Li-ion battery(3.7V) operation

**Connectors and description**

J1 USB connector : connect to external USB device

J2 Power connector : DC5V or Li-ion battery

Connector pitch 1.5mm single row

**Examples of USB video devices:**

PC cameras, microscope cameras

Telescope cameras, document cameras,

Surveillance cameras and snake tube cameras.

Electrical characteristics

Parameter	Condition	Min	Typ	Max	unit
Operation voltage		3.5	3.7	5	V
Operation current	With USB disconnect		130		mA
	With USB connected and user log in		350	410	mA
	With USB connected but no log in		260	270	mA
Operation temp		0		45	deg

Note : operation current will depend on the USB camera

Operation**Module side:**

1. Connect USB video device to the module
2. Power on the module by applying DC5V or battery. LED will be blinking to indicate the initialization. When it is ready, LED stop blinking.

iPhone side:

Using browser: Tap Safari, enter address: 192.168.xxx.1, the image of camera will display on iPhone, refresh will see the changes. (Due to iOS6 doesn't support auto update of MJPG)

Using App.

Preparation: Before it can view the camera, one needs to download the apps from App Store. There are many free and paid apps in the store for this purpose, here is one: "Camsee".

1. Turn on iPhone, at Setting, tap WiFi, a list of available devices will be displayed. Find the WFMxxx and tap. It will connect to module automatically, no password is required.
2. One can check the router address such as: 192.168.xxx.1, this address also given in the label on module.
3. Start Camsee, add a camera, key in the address, and port type 80, then OK
4. Now one can view the video stream anytime when log in to the module by tapping the Camsee icon.

Note: Video performance (resolution and frame rate) will vary by the type of camera used. USB cameras with VGA resolution and MJPEG compression are recommended.