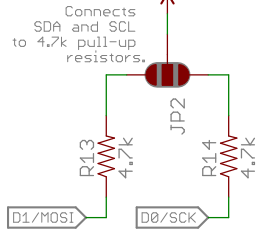
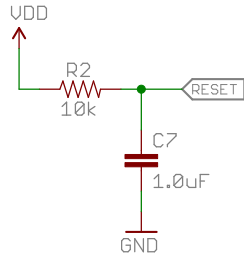
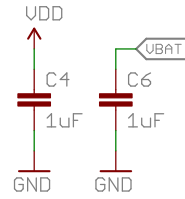


RC delay circuit for RESET line.
Used to keep pinout to standard 4-pin I2C headers and JST connectors.
Pulls RESET LOW momentarily at startup then pulls HIGH once capacitor is charged after 10ms

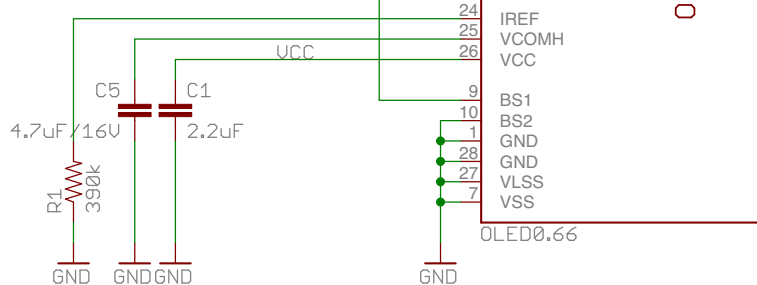


Connects SDA and SCL to 4.7k pull-up resistors.



D1 (SDAin) and D2 (SDAout) are shorted for permanent I2C mode.

BS1 is pulled HIGH and BS0 is Pulled LOW for permanent I2C mode.



OLED 0.66" 64 x 48

Power Supply

The OLED requires a 1.65-3.3V supply for its logic circuits (VDD) and a 7-7.5V supply for its display circuitry (VCC). Fortunately, it features a charge-pump boost converter to generate a 7V supply (VCC) from 3.3-4.2V. The charge-pump input voltage is taken from the VBAT line.

The VDD and VBAT lines are shorted together by default. This way the same supply you're using to power the logic can be boosted for the VCC supply as well. In this case, your VDD supply should be around 3.3V.

$$1.65 \leq VDD \leq 3.3$$

$$3.3 \leq VBAT \leq 4.2$$

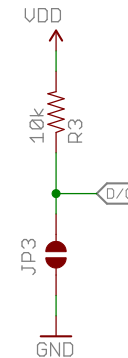
VCC (7.0-7.5V) will be generated by on-board DC-DC converter, as long as C3 and C2 are present. It's boosted up from VBAT.

VDD current < 300 uA

VCC current (Internally generated) = 5.8-20.9mA

VCC current (Externally supplied) = 1.7-6.9mA

Interface selection

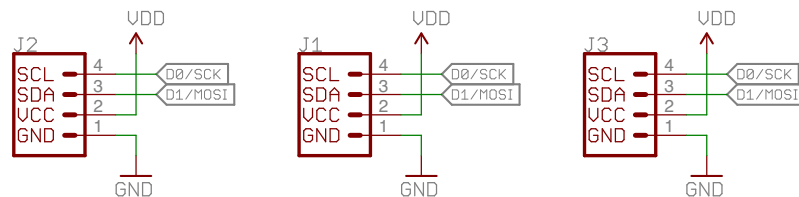


In I2C mode, D/C sets the lower bit of the 7-bit address. Short it one way or the other.

D/C	I2C Address
0	0x3C
1	0x3D (Default)



open hardware



Qwiic I2C Connections



Released under the Creative Commons Attribution Share-Alike 4.0 License
<https://creativecommons.org/licenses/by-sa/4.0/>

TITLE: Qwiic_OLED_Breakout_NO_T



Design by: Joel Bartlett

REV:
X10

Date: 4/12/17 1:20 PM

Sheet: 1/1