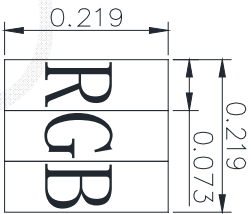
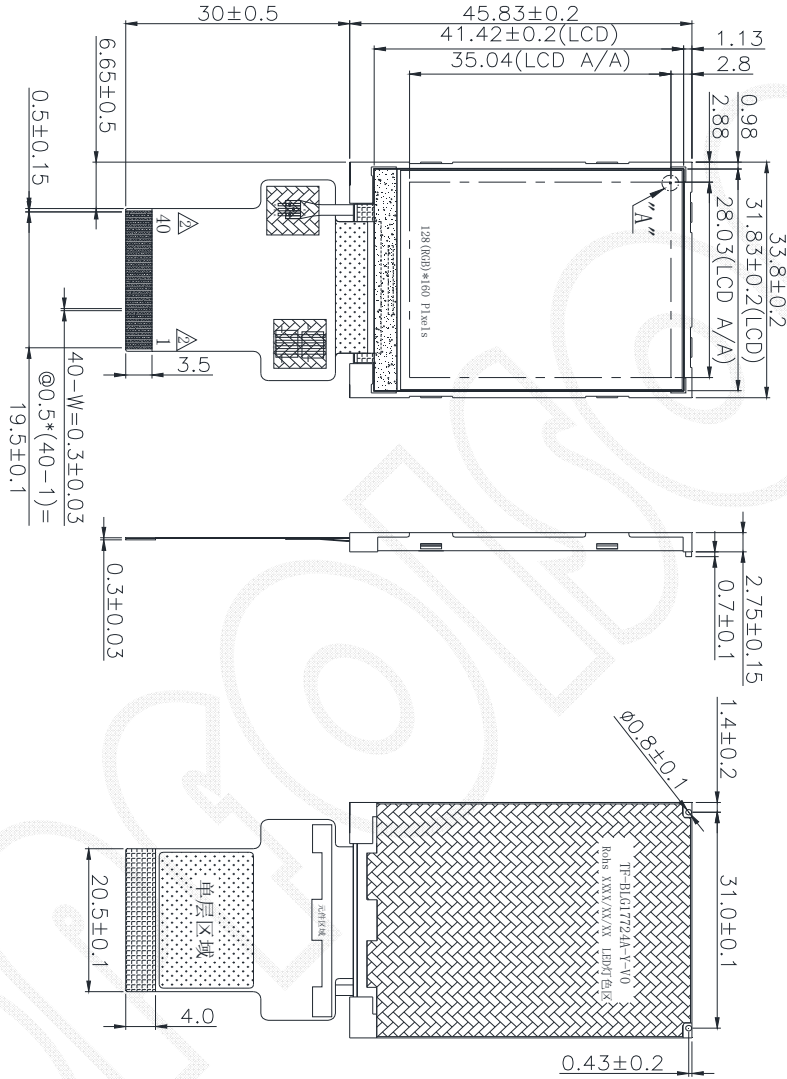




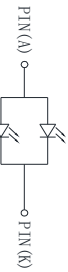
5. LCM drawing:

Rev.	Revision content description	Date
#1	FIRST ISSUE	2018-04-14
#2	更改FPC长度,更改FPC出Pin定义	2018-05-18
#3	更改FPC出Pin顺序	2018-06-04



Scale: 100X

- Specification:**
1. Display mode: 1.77" TFT / Normal White/ Transmissive
 2. Drive condition: VDD=3.3V
 3. Viewing direction: Gray Inversion direction: 12 O'clock
The Best Viewing Direction: 6 O'clock
 4. Operating temperature: -30°C to +80°C
 5. Drive IC is: S17738S
 6. Backlight: 2 CHIP WHITE LED
 7. Unspecified tolerance: ±0.30mm.
 8. ROHS compliant



LED CIRCUIT DIAGRAM:
If I=40mA Voltage=3.2V

深圳市拓丰源电子科技有限公司 TOPFOISON INDUSTRY Co., LIMITED		MOD. Name	TF-LCM17723A-N-S0	DESIGNED	丁浩贤	2018-06-04	CHECKED	VERIFIED	APPROVED	FILE NAME	Outline
UNIT	mm	SIZE	A4	SCALE	N-T-S					Sheet	1
										Or	1

No.	Symbol
1	IM2
2	IM1
3	IM0
4	RESET
5	NC
6	CS
7	RS/SCL
8	WR/D
9	RDX
10	SDI/SDA
11	NC
12	DB0
13	DB1
14	DB2
15	DB3
16	DB4
17	DB5
18	DB6
19	DB7
20	DB8
21	DB9
22	DB10
23	DB11
24	DB12
25	DB13
26	DB14
27	DB15
28	GND
29	GND
30	GND
31	IOVCC
32	VCC
33	LED-A
34	LEDK
35	LEDK
36	LED-PWM
37	XR
38	YD
39	XL
40	YU