

# **C1068 JPEG EV Kit**



Electronics123.com, Inc.  
general@electronics123.com  
330.482.9944  
102 East Park Ave.  
Columbiana, OH 44408

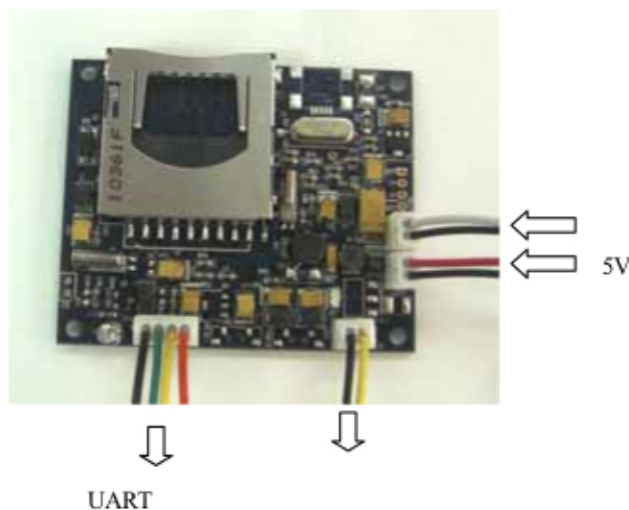
C1068	JPEG	1
CBL0-0504-3047	-UART RS232	1
CBL1-RS9P-1278	- RS232	1
CBL0-0001-1412	- 2pin	2
	- 2pin	1
ACDC-0510-x500	DC 5V ,1A	1
CDR3-6810-0000	CD ROM PC	1

## PC :

### 1. setup.exe



## C1068 :

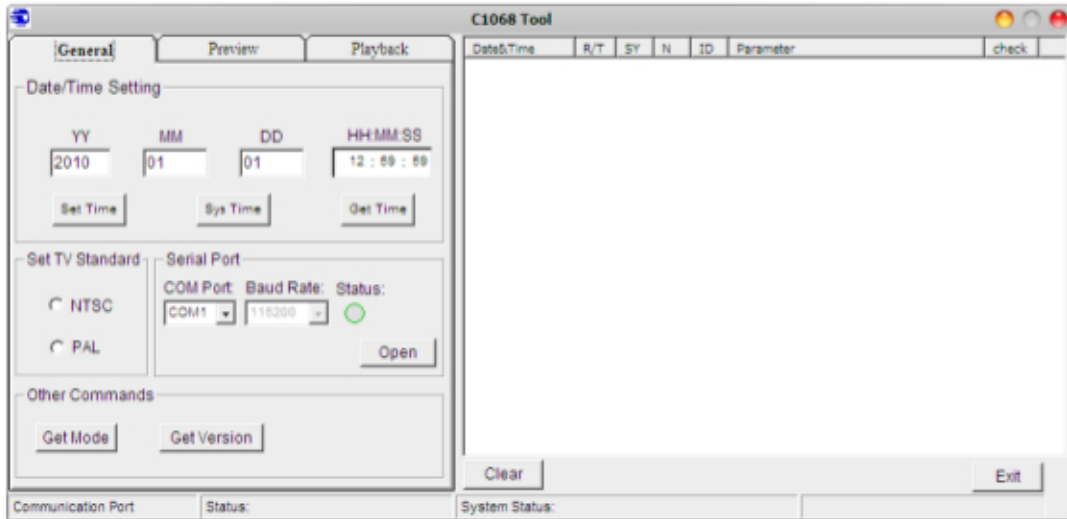


1. UART 4 UART
2. RS232 UART
3. 2 pin
4. 2 pin
5. 2 pin
6. SD ( SD )

**PC :**

1. PC C1068 5V UART  
LED TV

2. Start-> ->c1068->C1068Tool



3. C1068 COM

1. COM COM
2. USB COM COM COM1,  
"PC > > > > "

**C1068 :**

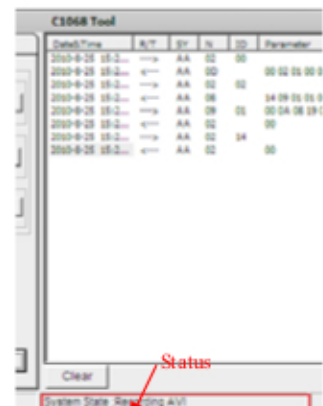
1. PC JPEG C1068

C1068

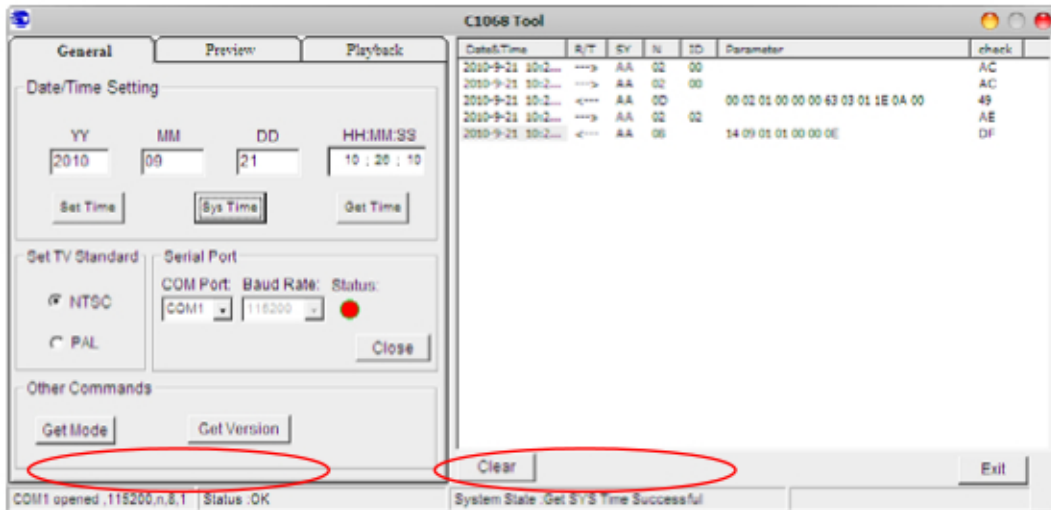
2. 3 General, Preview Playback

3. date/time, T/R(transmit or receive), SY(Sync), N( number of bytes followed), ID (command ID), detail parameters and checksum

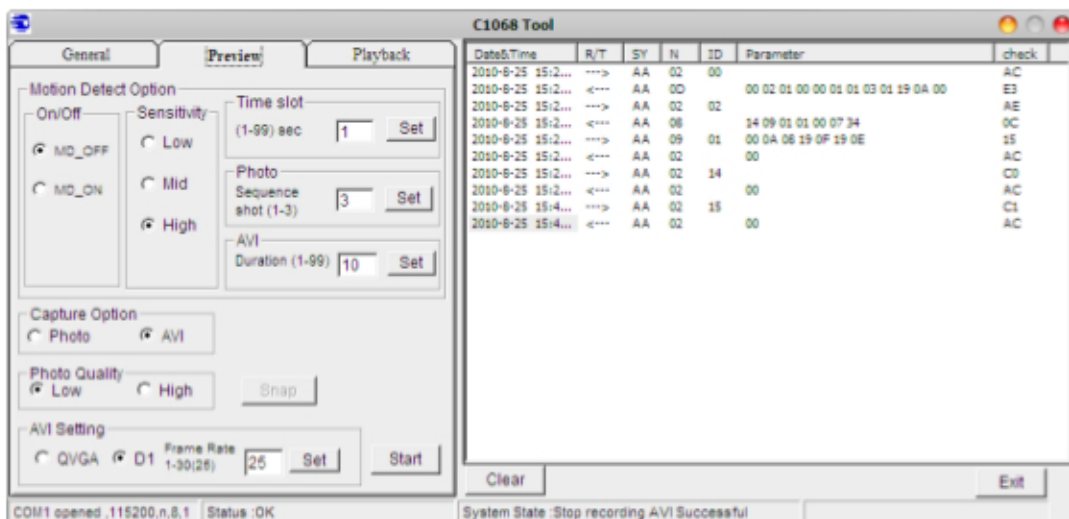
4. C1068



- \_\_\_\_\_ :
1. / COM
  2. / PC
  3. TV NTSC PAL PAL NTSC
  4. COM

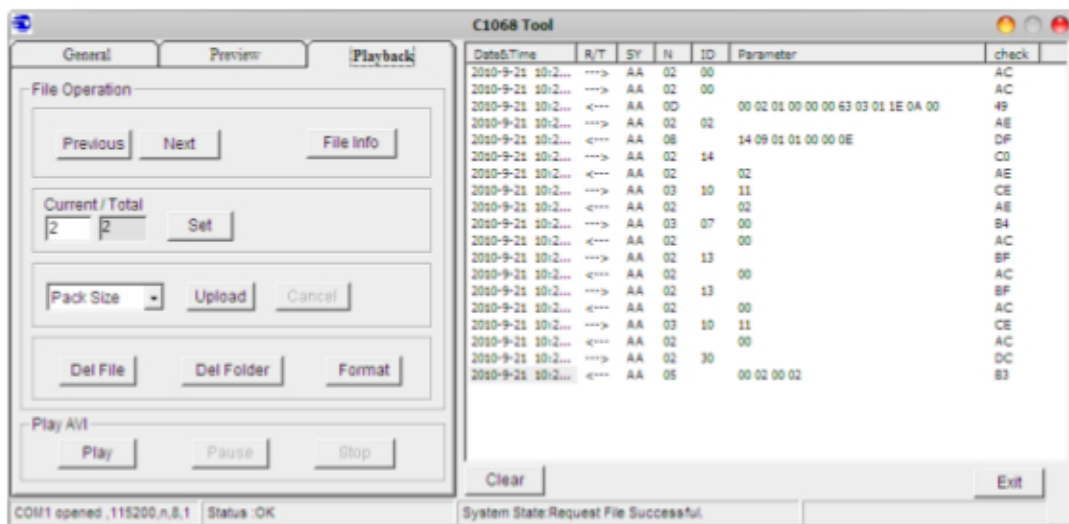


- \_\_\_\_\_ :
- 1 MD
    - 1.1 MD
    - 1.2 MD
    - 1.3 MD 1-99S ( )
    - 1.4 1-3
    - 1.5 1-99S
  - 2 JPG AVI
  - 3
  - 4 D1/1QVGA



\_\_\_\_\_:

1. TV
2. SD TV Del File Del Folder
3. Format SD
4. PC SD photo
5. AVI PC Upload



SD

