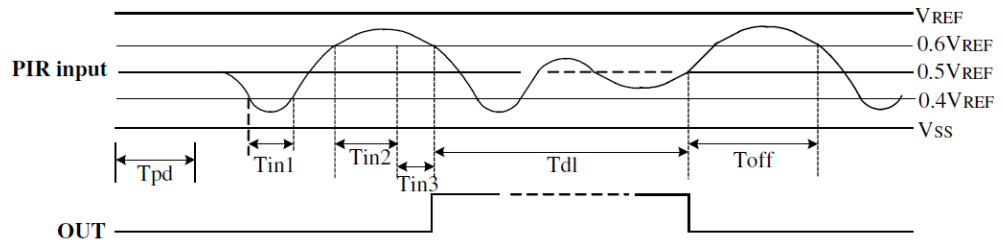


Model	PIR Sensor module	Category	<input type="checkbox"/> Toys/Game <input checked="" type="checkbox"/> Hobby <input type="checkbox"/> Books/Card <input type="checkbox"/> Premiums/Gifts
-------	-------------------	----------	----------------------------------------------------------------------------------------------------------------------------------------------------------



Operation

- Sensor the distance : ≥ 1.5 M
- External line length ≤ 15 cm
- Timing Diagram



Tpd: Start up delay 10 seconds.

Tin2: PIR signal length bigger than 0.2 second, note it is as an effective signal.

Tin3: System confirm as an effective signal input, then delay 0.8 seconds.

Tdl: Output delay 3.5 second.

Toff: When output been shut up, within 1 second accept no any PIR input signal.

Output voltage: Low is 0V, High is 4.5V (= Input voltage)

Operation Voltage	DC 2.6~5V
Operation Current	DC 4.5V/ 120uA