

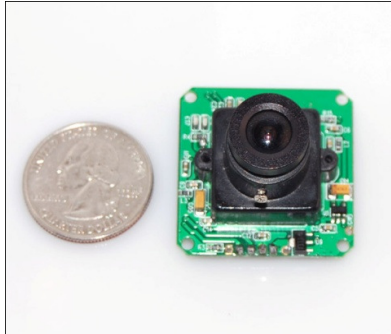
---

Step-by-step tutorial for using Electronics123.com's  
MODEL: Y201-TTL JPEG Color Camera  
Serial UART Interface (TTL level)

---

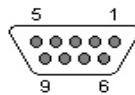
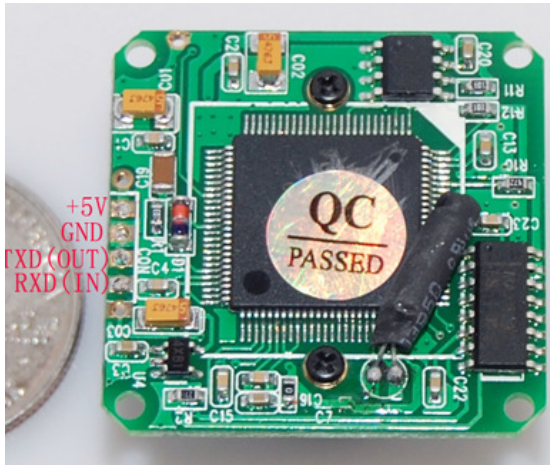
## Hardware needed

1. The camera itself



2. 5V power supply
3. RS232 Cable with DB9 female connector

## Hardware connection



9 PIN DE-9 FEMALE at the Cable.

Pin	Name	RS232	V.24	Dir	Description
1	(D)CD	CF	109	←	(Data) Carrier Detect
2	RXD	BB	104	←	Receive Data
3	TXD	BA	103	→	Transmit Data
4	DTR	CD	108.2	→	Data Terminal Ready
5	GND	AB	102	—	System Ground
6	DSR	CC	107	←	Data Set Ready
7	RTS	CA	105	→	Request to Send
8	CTS	CB	106	←	Clear to Send
9	RI	CE	125	←	Ring Indicator

***TXD(out) of camera is connected to pin 2 (RXD) of the DE-9 FEMALE.***

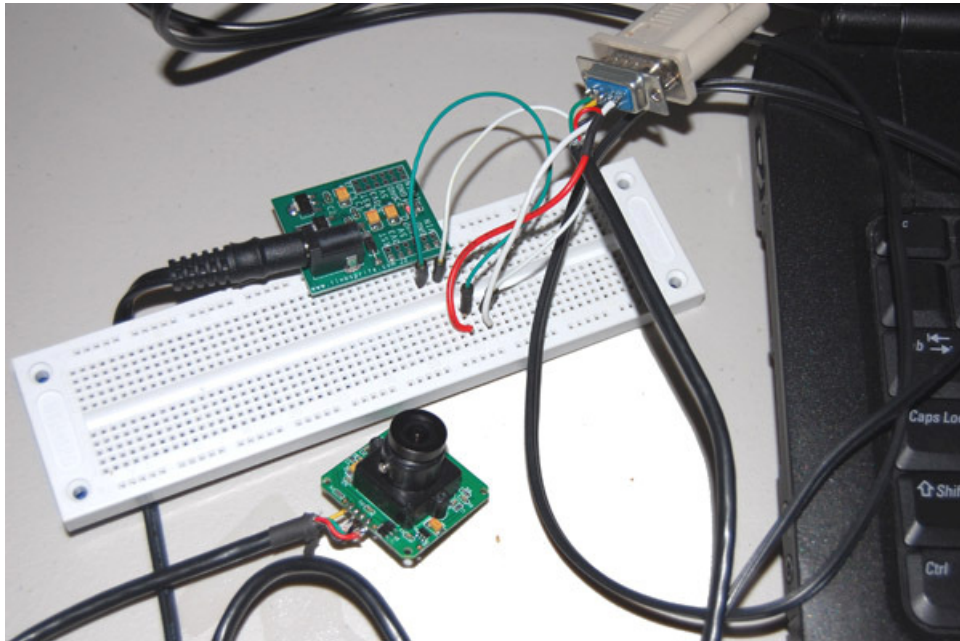
***RXD(in) of camera is connected to pin 3 (TXD) of the DE-9 FEMALE.***

***GND of camera is connected to pin 5 (GND) of the DE-9 FEMALE, and also connected to GND of Power.***

***+5V of camera is connected to power.***

---

*A photo of setup:*



## Software Needed

X-CTU from [digi.com](http://digi.com)

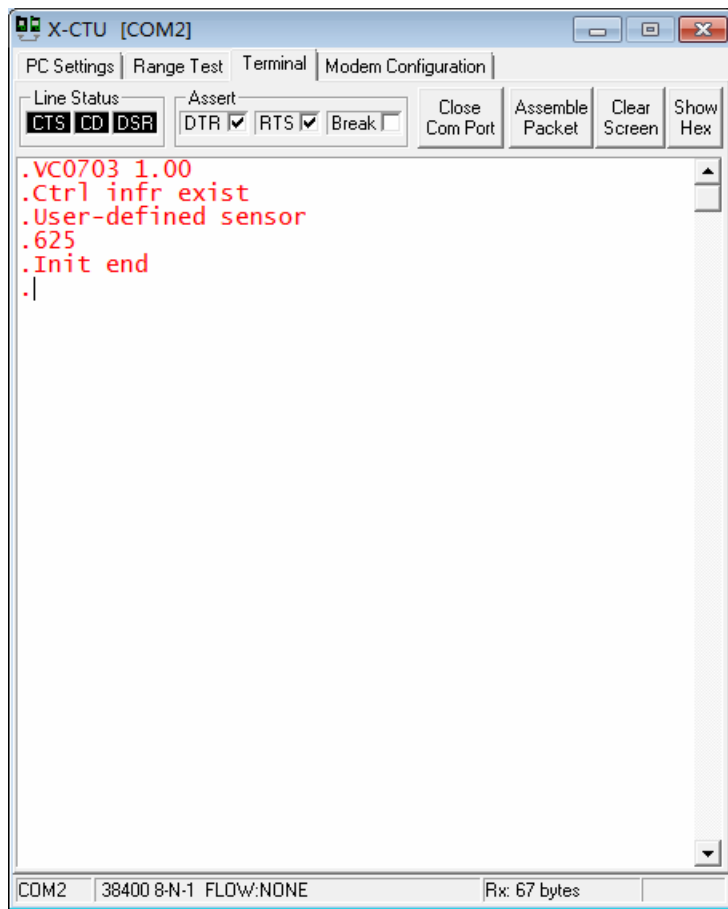
<http://www.electronics123.net/amazon/software/y201ttl.exe>

## Test Procedure

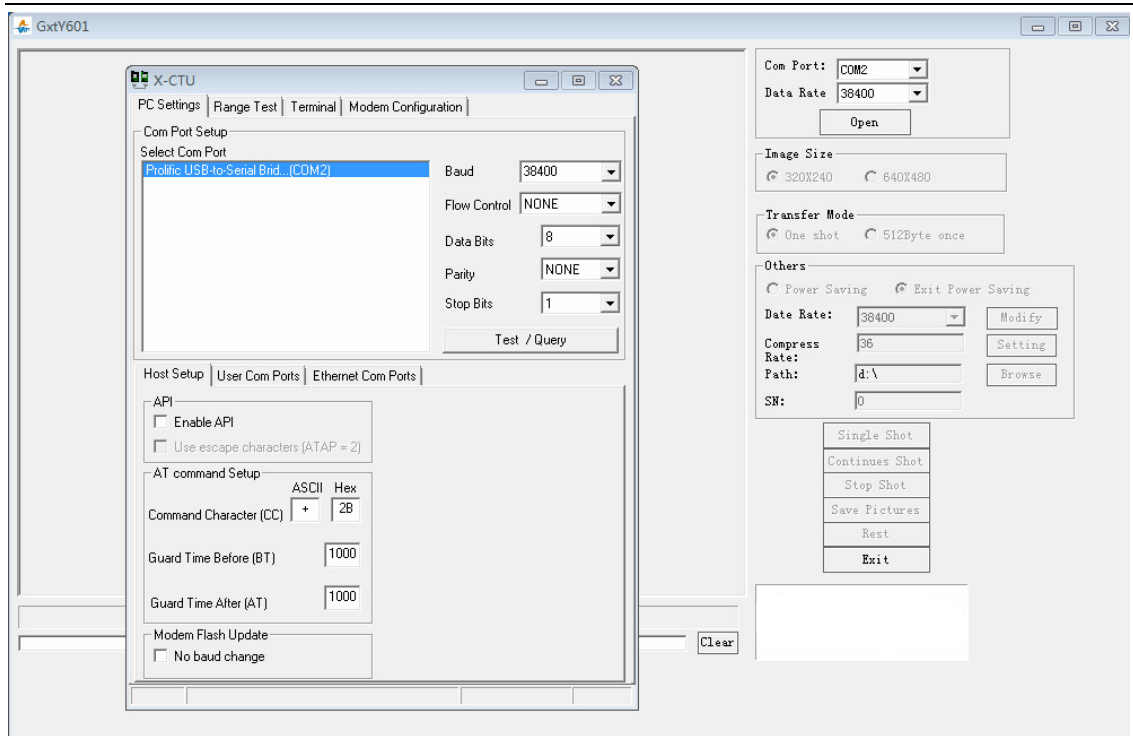
### Step 1: Sanity Check

Power On Reset.

X-CTU shows reset message:



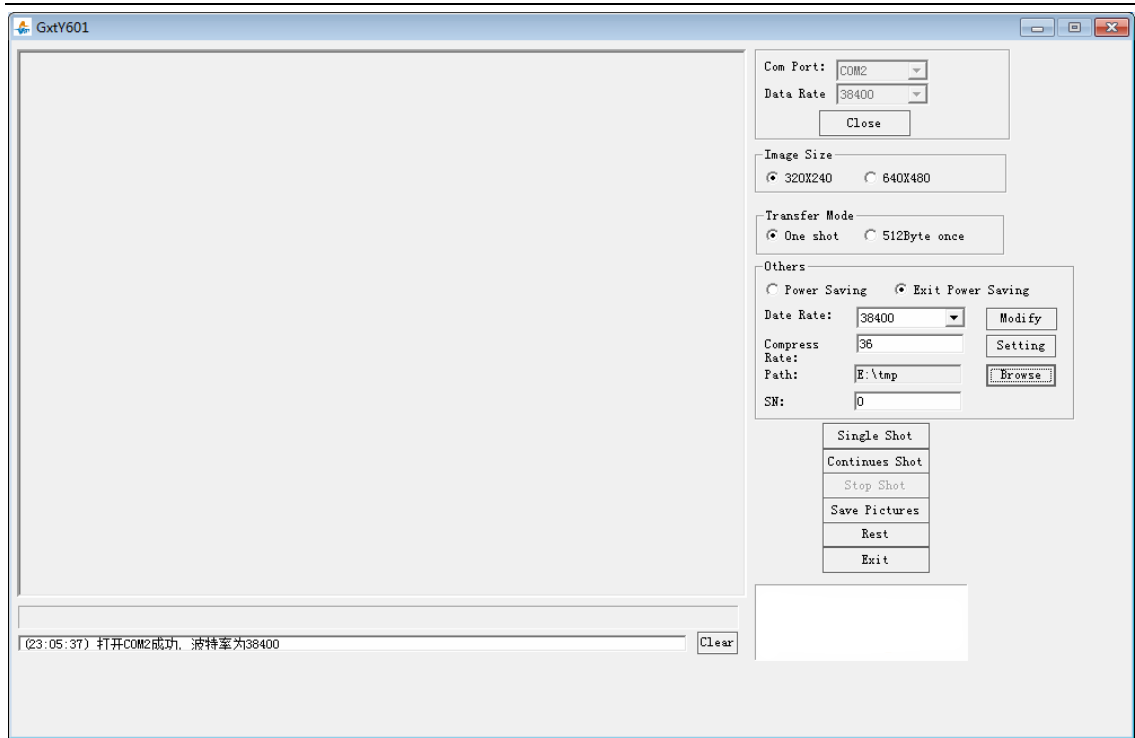
Step 2: Launch the evaluation GUI



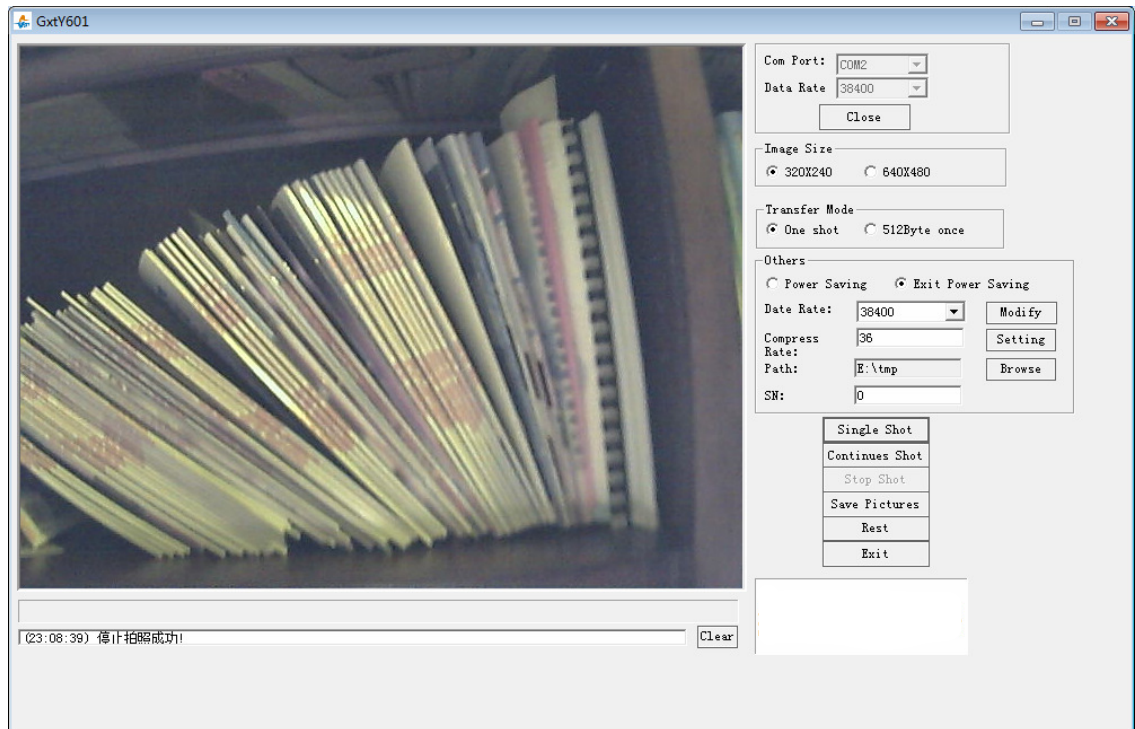
Click "Open" under the COM/Data Rate Section.

Modify the path for capture files. Note: this is a must. If the path is pointing to an invalid or unwritable location, the program may crash.

Step 3-a: Take picture with the evaluation GUI



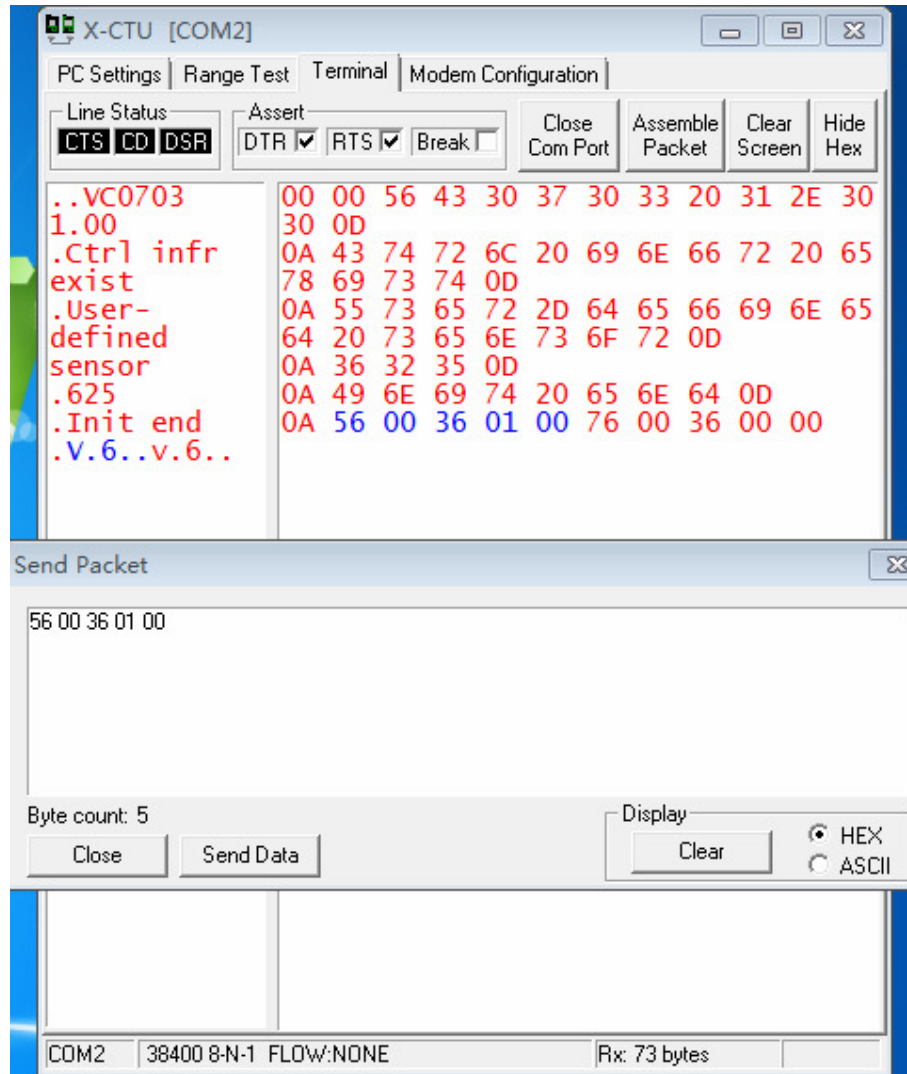
Click "Single Shot":



### Step 3-b: Take picture with X-CTU

Compose command in HEX (refer to use manual) and Send data. X-CTU will show the command you just send and the Camera's returned message.

Take Picture command:



---

Electronics123.com, Inc.  
102 East Park Ave  
Columbiana, OH 44408  
330.482.9944/888.549.3749  
fax: 330.266.7307

[www.electronics123.com](http://www.electronics123.com)