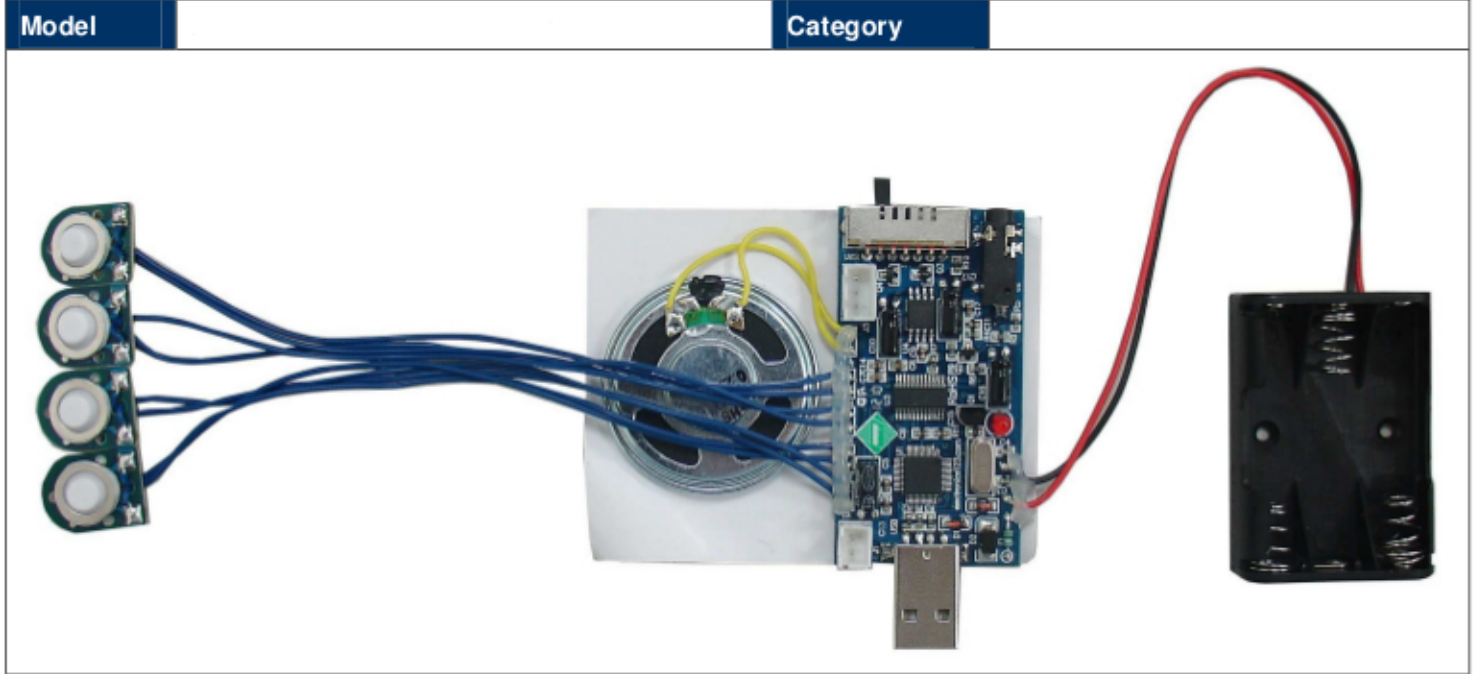




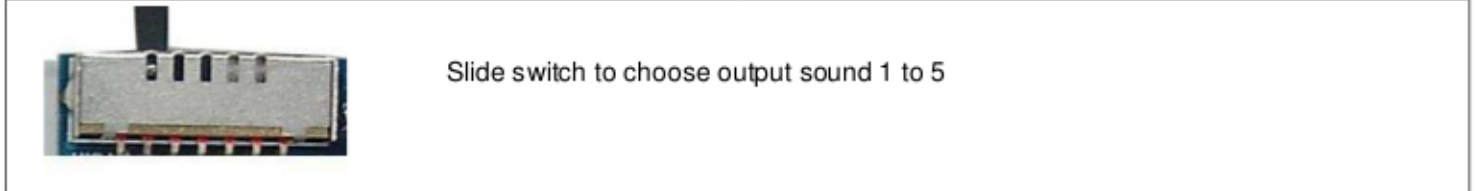


Product Specification



Optional add sensor

PIR Sensor USB6M+PIR only	Photo cell light sensor USB6M & USB6M+PIR
 <ul style="list-style-type: none"> ● Sensor the distance : ≥ 1.5 M (environment at 150~500 LUX and sensitivity at MAX) ● External line length ≤ 15 cm ● Standby current : 4.5V/ 120uA 	 <ul style="list-style-type: none"> ● Sensor the distance : ≥ 2 M (environment at 150~500 LUX) ● External line length ≤ 15 cm ● Standby current : 4.5V/110uA



Feature	
	<ul style="list-style-type: none"> ● 300 seconds of re-recordable voice message. (8K sample rate) 24 / 75 / 150 / 300 / 600 / 1200 seconds available at request. ● Slide switch to choose sound 1 to 5 output ● USB type A connection to PC. (USB1.1) ● Ideal for custom messages playback for various applications.

IC function	300 seconds of re-recordable IC, USB controller
Operation current	≤ 135 mA
Play time	≥ 350 times of 22 seconds message
Standby current	≤ 35 μ A
Input / switch	External Push switch x 4 + External sensor + slide switch to choose output
Speaker Size / Type	External 40mm Mylar speaker
LED type	LED playing indicator
Sound output	≥ 80 dB @ 10cm distance (surrounding at 60dB)
Operation voltage	DC 4.5V
Battery Type	External AAA x3 battery holder
Size	Main PCB 73x 30 x 7.5mm
Weight	30g (Battery not included)

Note: Actual product may vary in operation current, play time, loudness, depends on actual sound record.

BUSB02M-003 software operation manual

Installation.

1. Double click the "PM66_Bliss_V1.36_Setup.exe" to install the program.

Display language

1. The software is available with Traditional Chinese, simplify Chinese, and English interface.

Function select

1. Please enter project name as you wish
2. Please select **KEY** to choose the K1, K2, K3, K4 for different push switch
3. Select the trigger function you wish to use.
4. Please select "**DAC for Ext. AMP**"
5. Select the volume. Bliss suggests "Normal"

Prepare and assign custom sound

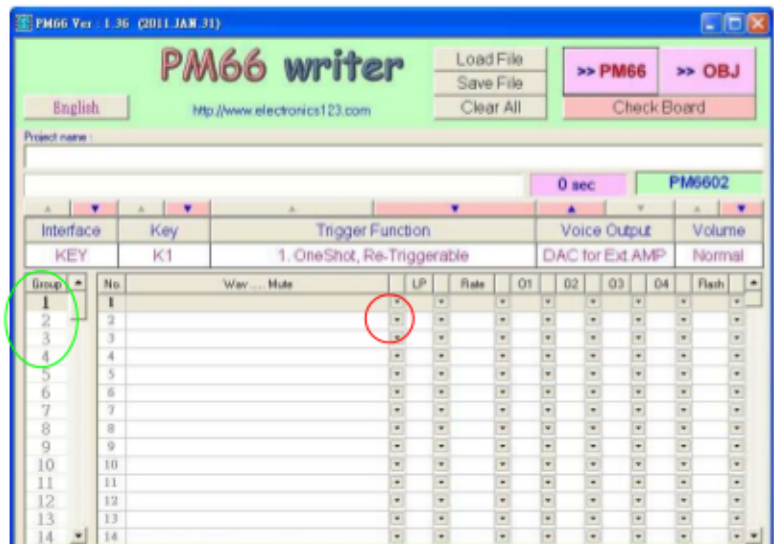
1. Please make sure the sound files are save as in WAV file, with attributes as PCM signed, 16bit, mono, 16k or higher sample rate.
 Note: A simple sound editing shareware can be download at www.goldwave.com
2. Press the down arrow as show in the red circle, and select new sound file.
3. Select Rate for sound quality. The better sound quality would take more space in memory card. Bliss suggest to use 8k or higher.
4. Select down area at "O1" to configure LED. Select "ON" for LED constant on. Select F:0 for LED flashing. Flashing speed can be change at Flash for 1~12hz.
5. Press Key and select **K2** for 2nd switch function, and configure as above.

Multi-section

1. Each group (as green circle) represents 1 section. Add sound file to each group allow you to play custom by the group sequence.

Record after all configuration is completed.

Press ">> PM66" to Record to the module. If you have OBJ file from pervious setting, you can press ">> OBJ" to reduce recording time.



Trigger function available as following

1. OneShot, RE-Trigger
2. OneShot, Non-Re-Trigger
3. LevelHold, Play 1 cycle
4. LevelHold, Play repeat
5. OneShot, RE-triggerable,
6. Play repeat.Toggle On/Off