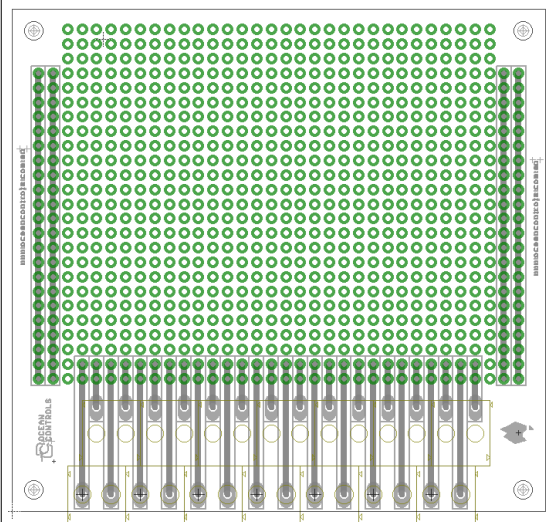


Enclosures with ProtoBoard and Terminals

- Easily build one-off and custom circuits into a DIN Rail mountable enclosure
- Professional looking enclosures
- 22-23 and 22-62 enclosures also panel mountable
- Each Terminal brought out to 2 Proto-Holes

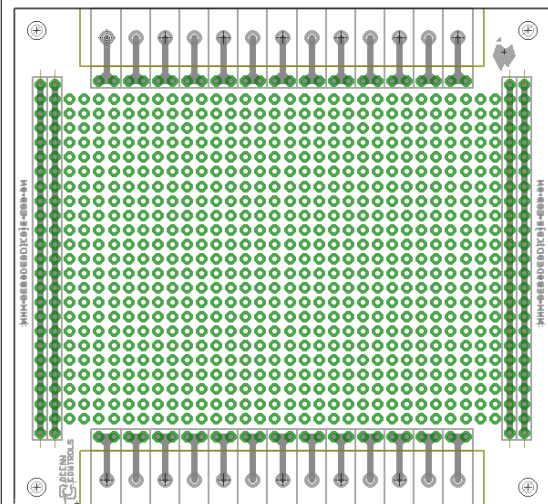
Board to suit ENC-005, ENC-007, 22-62 Enclosure

- 1 Double height row of 14 x 200mil (5.08mm) Screw Terminals (Total 28 Terminals)
- (30 x 22) x 100mil (2.54mm) Proto-Hole Grid
- Power/Ground buses



Board to suit ENC-006, ENC-008, 22-23 Enclosure

- 2 Rows each of 13 x 200mil (5.08mm) Screw Terminals (Total 26 Terminals)
- (30 x 23) x 100mil (2.54mm) Proto-Hole Grid
- Power/Ground buses



Board to ENC-020, ENC-021, ENC-022, ENC-023 Enclosures

- 8 or 12 x 200mil (5.08mm) Screw Terminals
- (23 x 25) + (8 x 14) + (7 x 8) x 100mil (2.54mm) Proto-Hole Grid
- Power/Ground buses

