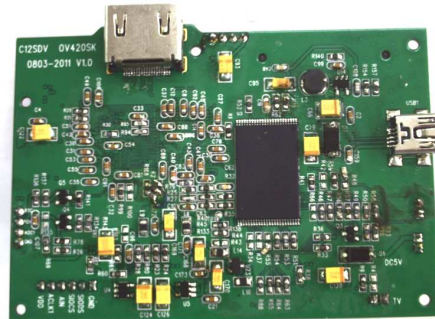


Introduction

This module has been designed to interface the micro camera muC301. It can be connected to HDMI TV monitor and display real time video at 720p. It performs still image capture and video recording, store files to SD card. It is good for desktop application.



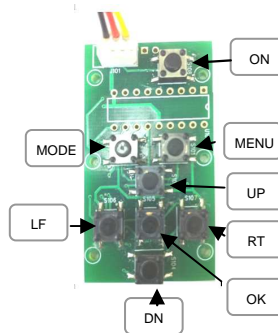
Key Features

- ✓ Interface to muC301
- ✓ Real time Video output, Support 720p
- ✓ Video display in center of screen / full screen
- ✓ One key for white balance tuning
- ✓ Manual capture JPG
- ✓ Image resolution 384*384
- ✓ Image quality fine tune possible
- ✓ AWB under different color temp
- ✓ Store to SD card, up to 16G
- ✓ Mass storage
- ✓ 5V or 3.7V Li-ion battery operated

Keyboard Design

8- Key design: power/mode/menu/UP/DN/LF/RT/OK

1. Power: power on the module
2. Mode: toggle playback or preview
3. Menu: for setup or quit the setup
4. LF/RT/UP/DN for item select
5. OK to confirm



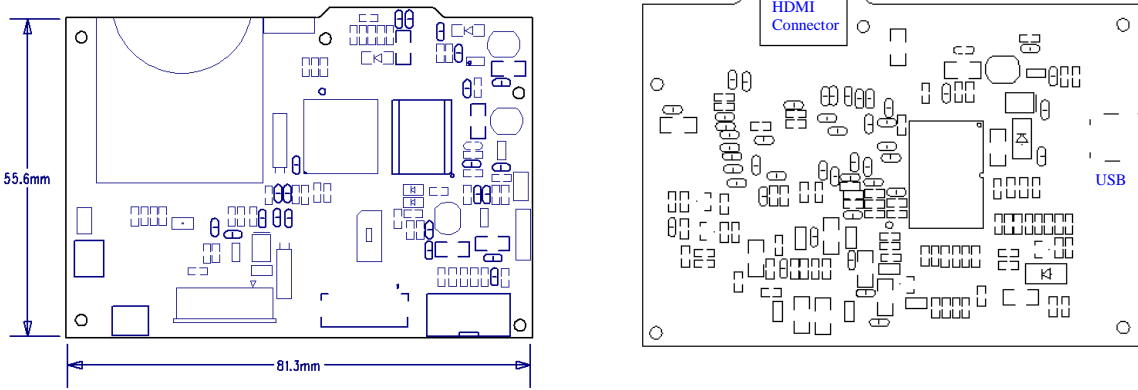
Module Specifications

| | |
|------------------|--|
| Board Dimension | 81.3x55.6mm |
| Storage | External SDHC card up to 16GB |
| Video Capture | 384*384 (30 fps) Unlimited capturing time depends on available memory space |
| Photo Resolution | 384*384 JPEG format |
| USB Interface | Mass storage mode USB 2.0 |
| Power | DC 5V/AAx4/Li-ion 3.7V battery |

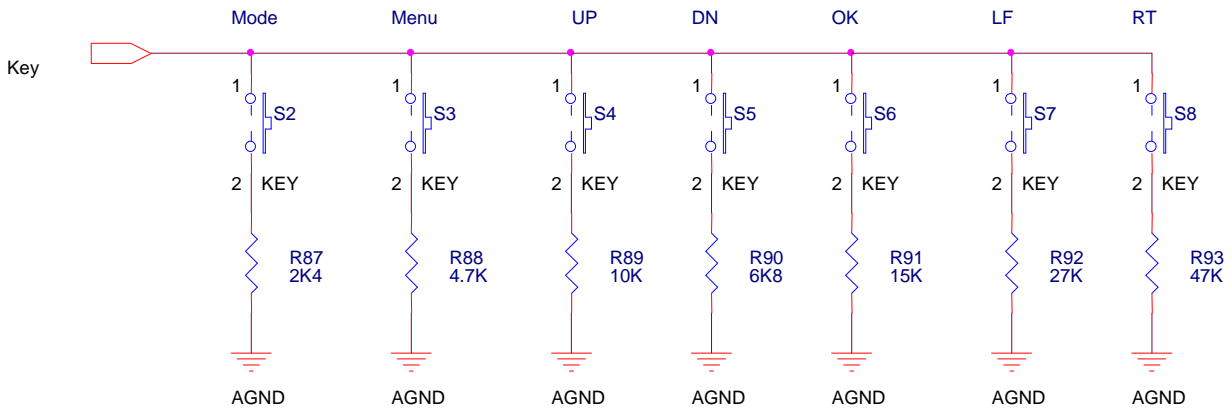
Electrical Characteristics

| Parameter | Condition | Min. | Typ. | Max | Unit |
|-------------------|--------------------------------|------|------|-----|------|
| Operation Voltage | | 3.7 | 5 | 6 | V |
| Operation current | Preview | | | | mA |
| | Capture JPG (Peak @ capturing) | | | | mA |
| | Capture AVI (Peak @ recording) | | | | mA |
| | Playback | | | | mA |

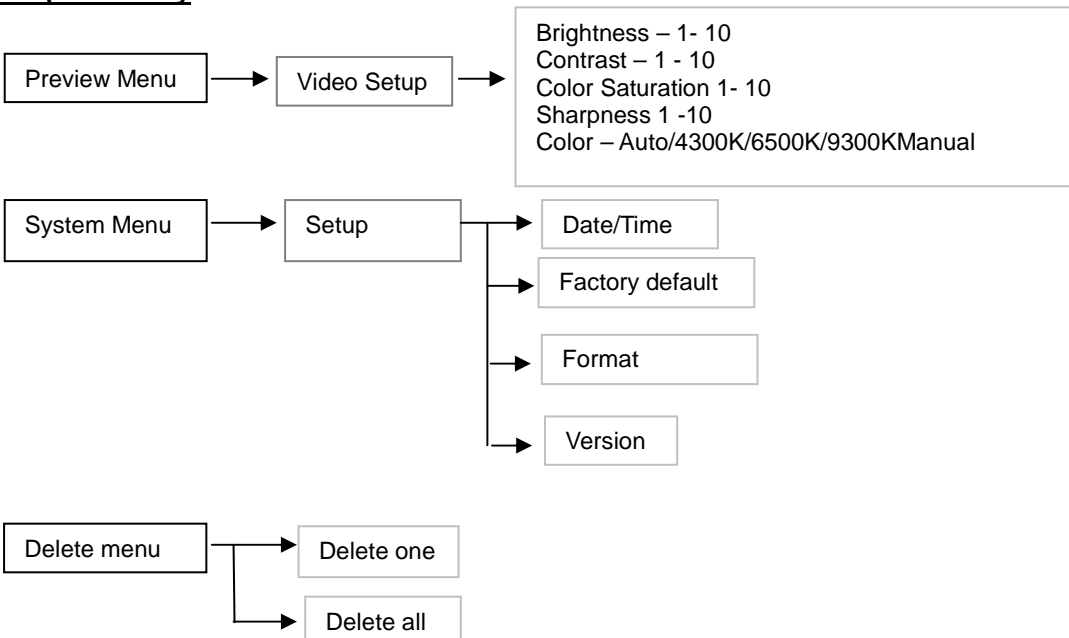
Mechanical Dimension



Keyboard Circuit



Setup Summary



Operation:

On-off the module

Press once PWR key, the module will power on. By default it enters preview mode. Note the module needs to have the SD card for image recording. It will display a “?” logo if the card is not presented. It supports hot plug.

Preview mode

1. Press MODE to toggle between preview mode and playback mode.
2. Press LF to take a JPG picture.
3. Press RT to start recording AVI, press it again to stop recording. When memory is full, it will show “Memory Full”.
4. Press UP to turn OSD on and off.
5. Press DN to do AWB according to the user’s working condition. Before doing white balance, point the camera to the white paper and hold, press DN button once, it will do AWB. When the wordings “Auto White Balance” disappeared in the screen, means AWB has been done.
6. Press OK to switch display format full screen or 1:1

Menu







Press Menu key to enter parameter setup. Use UP/DN to select item, LF/RT to toggle value. Text in red means the current setting. Press Menu again to exit

1. Brightness – 10 By default it is set to 3
2. Contrast: 1 - 10. By default it is set to 1
3. Color Saturation:1-10. By default it is set to 4
4. Sharpness: 1 - 10: By default it is set to 1
5. Color Mode: AUTO/4300K/6500K/9500K/Manual By default it is set at AUTO. User can change to other manual settings.
6. Exit: press ok, save the setting and quit this menu. When next time power on the device, it will load the previous settings as default. If it is not exit properly, the setting will not be stored.

| INPUT SETTING -VIDEO | |
|----------------------|------|
| BRIGHTNESS | 5 |
| CONTRAST | 5 |
| SATURATION | 5 |
| SHARPNESS | 5 |
| COLOR | AUTO |
| EXIT | |

Playback Operation

1. Press mode to toggle between preview mode and playback mode.
2. If no SD card is presented, it will show no files and enter preview mode
3. Files are displayed in thumbnail of 6 photos. Press LF/RT to move to previous or next file, press OK to display current file in full screen.
4. When file is selected, press UP to turn OSD on and off. Press OK to start playing AVI.
5. At playing AVI, LF for backward, OK to stop. Use DN to pause / resume.
6. When backward playing, press RT to forward playing.
7. Delete file: press Menu to select delete one or delete all, confirmation is required.

| | | |
|---|---|---|
|  10/21/2010 09.00 0001 |  10/21/2010 10.00 0002 |  10/21/2010 11.00 0003 |
|  10/21/2010 12.00 0004 |  10/21/2010 13.00 0005 |  10/21/2010 16.00 0006 |
| PICT0006.AVI | | |

Menu

1. Use UP/DN key to select, use OK to confirm select
2. Sub-menu will prompt for confirmation when deleting. Always set default value to Cancel, use UP/DN to move cursor, OK to confirm and quit.

| | |
|---|--|
| <u>Playback</u> Delete One Delete All Exit | <u>Delete One</u> Cancel Confirm |
|---|--|

Note: all files are saved under the folder called DCIM. The files will be saved under the sub-folder with the name start from 100IMAGE, each folder contents 1000 files. File names will be PICT0001.JPG, PICT0002.AVI ... PICT1000.JPG

PC Connection

The module can be connected to PC thru USB port and perform as mass storage device. When connected, the display will show “PC Connected”

System Setup

1. Press and hold the MENU key for 5sec until enter system setup menu. Use UP/DN key to select, use LF/RT key to toggle the selection, use OK to confirm.
2. Setup
 - 2.1 Date Time: the system has built-in the real time clock, and time stamping to the image, enter the correct date time is essential for the system. Press OK to enter date time setting. Use UP/DN to increase/decrease digit, LF/RT to shift next field, OK to confirm.
 - 2.2 Factory default: restore factory default settings.
 - 2.3 Format: to format the SD card, need confirmation
 - 2.4 Version: check current F/W version.

```

SETUP - SYSTEM
DATE/TIME
FACTORY DEFAULT
FORMAT
VERSION
EXIT
  
```

```

DATE TIME
      YY MM DD
      2007 01 01
      HH MM SS
      12 : 00 : 00
EXIT
  
```

Keys Operation matrix

| | Preview | Playback (Thumbnail) | Playback single file |
|------|--------------------|----------------------|----------------------|
| Mode | Change to playback | Change to preview | Playback (thumbnail) |
| Menu | Enter setup Menu | Select file | Delete menu |
| UP | Turn on/off OSD | Previous 3 file | Turn on/off OSD |
| DN | AWB | Next 3 file | - |
| LF | Capture JPG | Previous file | Previous file |
| RT | Start/stop AVI | Next file | Next file |
| OK | Full/1:1 | Select current file | Start playing AVI |

| | Playing AVI | Set up Menu | Date time setting |
|------|---------------------|---------------------|---------------------|
| Mode | Enter playback mode | Enter playback mode | Enter playback mode |
| Menu | - | Quit menu mode | Quit menu mode |
| UP | Turn on/off OSD | Select item | Increase digit |
| DN | Pause/resume | Select item | Decrease digit |
| LF | Backward | Select setting | shift to previous |
| RT | Forward | Select setting | shift to next |
| OK | Stop | Confirm and quit | Confirm and quit |